

TECHNICAL DRAWING LC

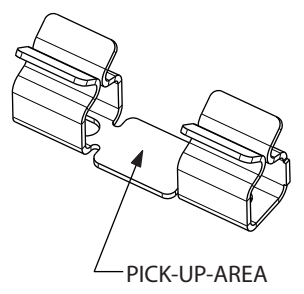


Drawing Number: 14466

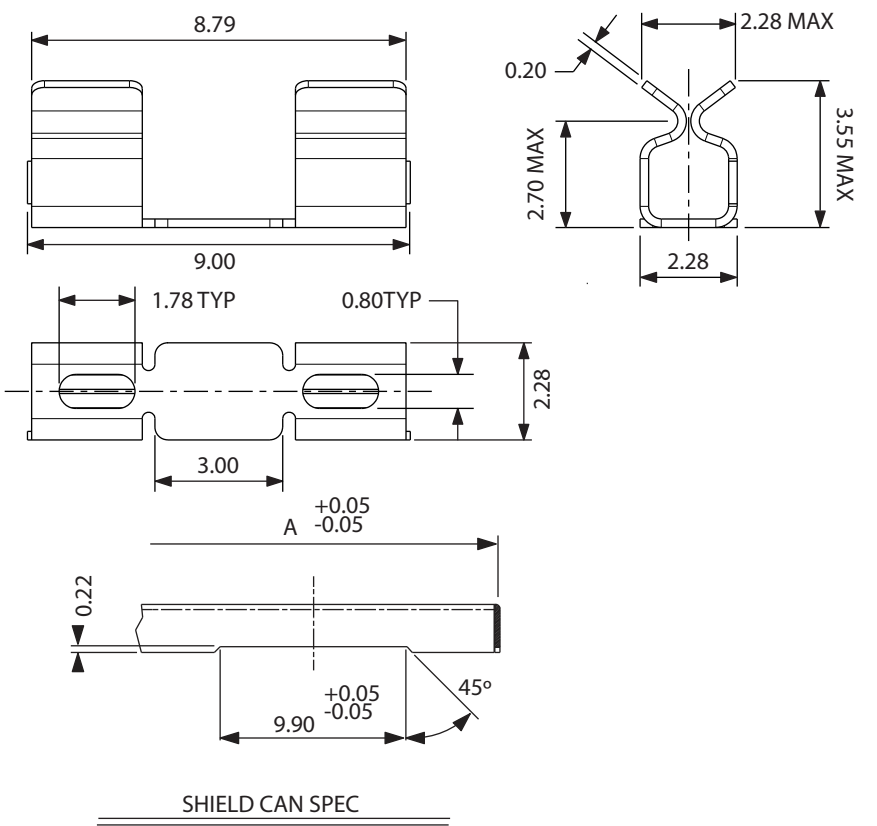
All dimensions in mm

Need to scale

Isometric drawing

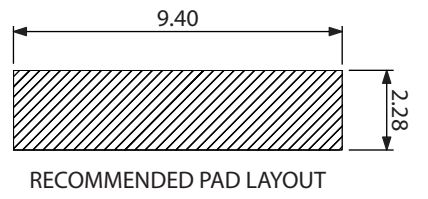


2d drawing



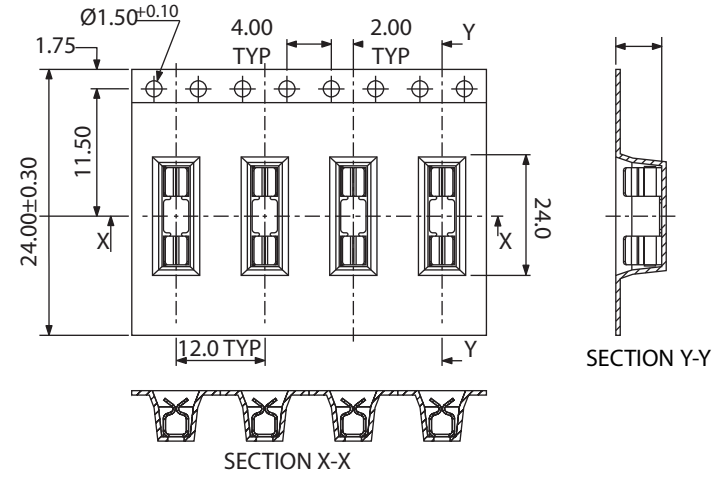
SHIELD CAN SPEC

Recommended solder land size

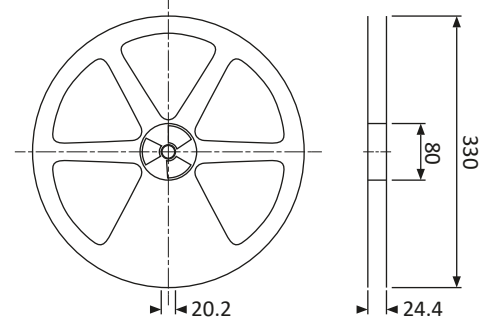


RECOMMENDED PAD LAYOUT

Plastic Carrier specification (Antistatic material)



Plastic reel drawing



(Quantity per reel : 1.500)

Note

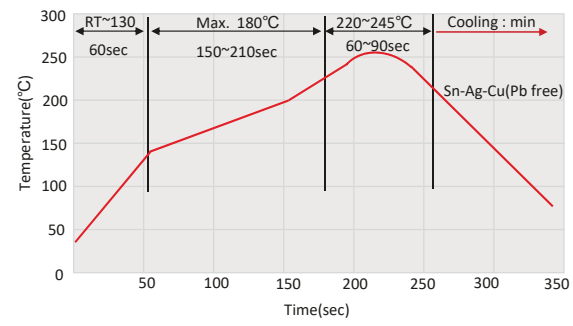
1. Material : Stainless steel SUS301-1/2H
2. Finish : Ni / Sn Plating
3. Mechanical characteristics :
 - Insertion force : Max. 1.000gf
 - Withdrawal force : Min. 30gf
 - Durability : 20 Insertions Minimum.
 - Contact resistance : 100mΩ Max.
 - Shield thickness : 0.17mm ~ 0.30mm
4. Environmental characteristics :
 - Operating temperature range : -40°C TO +150°C
 - Storage temperature range : -40°C TO +85°C
 - Salt spray test : None corrosion
5. Meet Eu-RoHS

This specification will be changed without previous notice)

Characteristics of each material

No.	Material Name	Specification	Material
1	Stainless steel	Thickness : 0.2 ± 0.02	SUS 301-1/2H

Reflow soldering condition



Jacobus IJpsweg 124
3316BP Dordrecht
the Netherlands

E-mail: info@hollandshielding.com
Phone: +31 (0)78 - 613 13 66
Fax: +31 (0)78 - 614 95 85

Title:	Drawing Large Clip
Drawing:	Large Clip
Number:	14466
Date:	05-09-2014
Drawing by:	Christian van Vugt
Finish:	Tin over nickel
Dimention classification:	★Critical ▼Major ()Reverence
Tolerance	.X ±0.25 .XX ±0.10