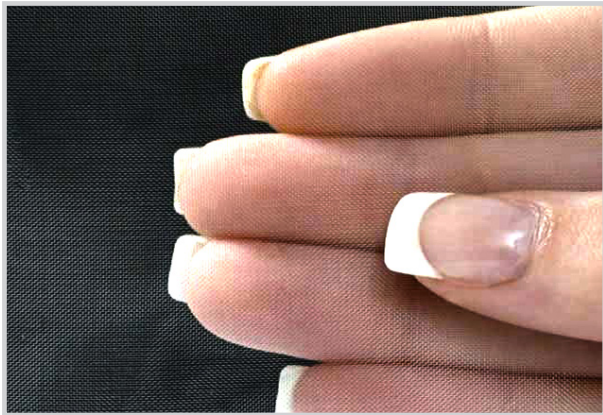




8903 Conductive mesh with stainless steel



Plain conductive mesh foil

Material & Construction

Conductive mesh is a stainless steel over Polyester Fabrics. The base layer is the highly conductive stainless steel mesh offer excellent surface conductivity, shielding effectiveness, and corrosion resistance for a variety of application. Conductive mesh is recommended to obtain high EMI shielding at frequency range from 500KHz to 10GHz.

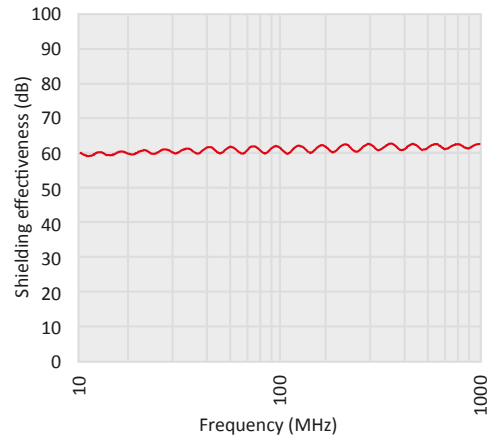
Chemical composition

Item	Unit	Result
C	Mass%	<0.07
Si	Mass%	<1.0
Mn	Mass%	<2.0
P	Mass%	<0.045
S	Mass%	<0.015
Cr	Mass%	16.5-18.5
Mo	Mass%	2.0-2.5
Ni	Mass%	10.0-13
N	Mass%	<0.11

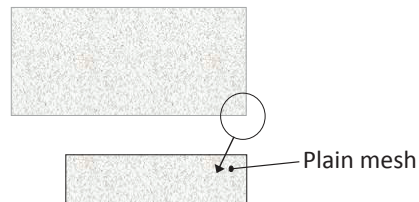
Characteristics

Item	Unit	Spec.	Reference
Width	mm	1000	
Conductive mesh Thickness	mm	0.06±0.01	
Tensile Strength	N/mm ²	998	Elongation 26%
Shielding Effectiveness			
Mesh Count	Inch	100	#100

Shielding effectiveness



Appearance



How to order

When you want to order 8900 series Conductive mesh then please specify the part number as follow

Part number	Width (mm)	Width (mm)
8902	150	1000
8901 : Conductive mesh with flash nickel (black)	Specifies the width of the sheet Conductive mesh you need	Specifies the length of the sheet Conductive mesh you need
8902 : Conductive mesh with flash nickel		
8903 : Conductive mesh stainless steel		